

## Celebrating Your Generosity

Each year, the Marlington Alumni Association proudly recognizes a new class of Dukes. Some of our scholarship recipients are the first in their families to go to college. Some take on new challenges to ultimately return to this community to work, teach and become community leaders. We cry. We cheer. And we celebrate with each student and family.

Yet the only thing more rewarding than learning how Marlington Alumni Association scholarships impact students, is the very special privilege we have to help friends and neighbors like you create permanent, lasting legacies. Whether honoring a loved one, remembering a former teacher or providing an educational opportunity in a field you love, we thank you for partnering with us to fund and grow new scholarships each year.

At each awards banquet the MAA proudly tells the story behind each scholarship. We purposefully honor each donor and respectfully remember the life of each honoree. Thank you for entrusting your legacies with us. Thank you for helping us affirm each new class of Dukes!



The MAA held a special donor reception prior to its annual scholarship banquet on Monday, April 18, 2016.

Attending included:

1. Patricia, Raymond and Chris Barker
2. Kevin Krabill and Rick Snode
3. Marsha Graham and Marilyn Snode
4. Fred and Jill Elsass



# Marlington Alumni Golf Outing

On Friday, July 15, the Marlington Alumni Association (MAA) hosted its 20th annual golf outing at Tannenhaut Golf Course. The 9 a.m. shot gun start was the beginning of a beautiful day for golf!

This event is the organization's largest fundraiser, and this year was no exception. Over \$15,000 was raised through sponsorships and 32 teams of golfers, making 2016 another record-breaking year!

As always, golfers enjoyed breakfast, a great round of golf and a steak dinner. Door prizes for every player are always a yearly treat as well as the prizes for contest winners. Lavery Automotive sponsored its annual contest at hole #11, giving golfers the opportunity to win a 2016 Chevrolet Cruz with a hole-in-one. As of yet, no one has accomplished the feat.

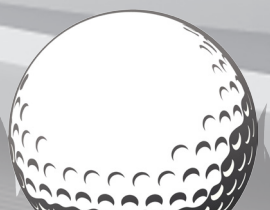
Earning first place, with a score of -14, was Joe Knoll ('84), Scott Middleton ('84), John Oyster ('90), and Dave Mazzei ('84). The second place team, with a score of -13, was Josh Frase ('02), Jeff Frase ('80), Ryan Gaughan, and Zach Keller. The third place team, with a score of -13, was Ryan Headley ('11), Ray Headley, Zach Headley ('07), and Scott Frase ('82). The tie breaker was determined by Tannenhaut.

This successful event was organized by the MAA's Golf Committee members Sam Bacon ('54), Emily (Wallace) Deack ('08), Karen (Zellers) Garra ('59), Laurie (Santschi) Gemberling ('77), Kevin Krabill ('86), Bill Liber ('65), Martha (Dickerhoof) Palmer ('77), Jerry Peterson ('68) and Kent Walter ('71).



Congratulations MAA Golf Winners. From left are: Joe Knoll, Scott Middleton, John Oyster and Dave Mazzei.

**Mark your calendars now for the  
MAA's 2017 Golf Outing set for Friday, July 21!**



# Thank You Golf Sponsors

*The MAA appreciates the support of golfers as well as many generous individuals and businesses.*

## **Corporate Sponsor — \$2,500** **K. Palmer & Associates** **Insurance Agency**

## **Diamond Sponsors — \$1,000**

Burden Electric Inc.  
Robertson Heating Supply/Robertson  
Kitchen & Bath

## **Gold Sponsors — \$500**

Alliance Ventures  
Bill Liber ('65)  
Compass Systems & Sales Inc.  
Consumers National Bank  
Custom Poly Bag Inc.  
Hagan Heating & Plumbing/Hagan for  
State Representative  
Karen (Zellers) Garra ('59)  
Mac LTT  
Royer Farms Inc.  
Quickdraft Inc.

## **Hole Sponsors — \$100**

Aaron ('93) & Roxanna Krabill  
Accentrix Salon & Spa  
Anstine Machining Corporation  
Blasiman Fire Equipment  
Bonfert Glass  
Buckeye Packaging  
Cassaday-Turkle-Christian Funeral  
Services  
Dave ('88) & Paige Krabill  
Davidson Water Well Drilling  
Dehoff's FGL Inc.  
Evan & Suzane Morris Family ('83)  
Evanich Accounting & Tax LLC  
Fisher Power & Electric (Jeff Fisher)  
( '93)  
Karen (Zellers) Garra ('59)

Haidet's Tax LLC  
Hartville Hardware  
Jim Fisher (School Board Member)  
( '86)  
Joyce A. Lamb, Attorney at Law ('83)  
Kennedy's BBQ  
Maize Valley  
Marlboro Supply  
Marlington Alumni Association Board  
Members  
Miller's Flowerland  
Old Carolina BBQ  
On-Point Financial Services (Hunter  
Palmer) ('11)  
On The Spot Cleaners & Restoration  
Pauli Electric Inc.  
Powers Oil & Propane  
Quality Oil & Gas Corp.  
Rockledge Animal Clinic  
Salem Republic Rubber Co.  
Dennis ('76) & Vondea Sheaffer ('76)  
Stanley Steamer  
Strouble Water Hauling  
Taggarts Ice Cream  
Tom ('66) & Mary Swartz ('66)  
Trap's Sporting Center  
Van Nostran Young & Associates  
Insurance Agency  
Wally Amour Chrysler-Dodge-Jeep  
Washington Ruritan Club  
We're Rolling Pretzel Co.  
West Main Veterinary Clinic  
White Mechanical  
White Physical Therapy

## **Hole Prize Sponsors**

College Inn of Alliance  
Grinders Above and Beyond  
Grove Appliance TV & Audio  
Lakeview Golf Course

Lavery Automotive  
Marlington Alumni Association  
Board Members  
Pleasant View Golf Course  
Stanley Steamer – Pucci Family,  
and Tannenhauf Golf Club

## **Door Prize Donors**

Accentrix Salon & Spa  
Allstate Insurance  
Blasiman Fire Equipment  
Blue Fig Restaurant  
Bob Evans  
Cockrill's Studio  
College Inn  
Concorde Therapy  
Cope Farm Equipment  
EmbroidMe  
Grinders & Such  
Grove Appliance  
Huntington National Bank  
Kennedy BBQ  
K. Palmer Insurance Agency  
Lakeview Golf Course  
Lavery Automotive  
Maize Valley Winery  
Manhattan Cleaners  
Marlington Alumni Association  
Board Members  
Mary (Lamb) Biller ('77)  
Marlington High School Classes of  
1976, 1977 and 2011  
Mount Union Mill Inc.  
Papa Gyros  
Pleasant View Golf Course  
Stanley Steamer  
Taggart's Ice Cream  
Tannenhauf Golf Course  
Texas Roadhouse  
Tom ('66) & Mary Swartz ('66)  
Wet Paws Dog Spa



# MAA 2016 *Outstanding Alumni*

Carey A. Smith is currently President of the Defense & Space strategic business unit of Honeywell Aerospace, which provides a wide range of engineering, products and logistical services to the U.S. Department of Defense, NASA, government agencies, international ministries of defense and defense contractors worldwide.

During her years at Marlinton High School, Carey was a member of the National Honor Society and participated in tennis and track. She recognizes her tennis coach Paul Ellis "as a big influence on how to work hard and exhibit the right behaviors."

Carey's interest in engineering was sparked by a career day visit to Morgan Engineering organized by her dad. After graduating from Marlinton in 1981, she attended Ohio Northern University earning a Bachelor of Science degree in electrical engineering and computer science and received her Master of Science degree in electrical engineering from Syracuse University.

Carey began her career with IBM Federal Systems in 1985 as a systems engineer. She took on new challenges and responsibilities in program management, engineering management, business development, strategic planning, capture management and operations management.



Through acquisitions, Carey became part of the Lockheed Martin Corporation and has spent a total of 26 years in the aerospace and defense industry. Prior to this assignment, her most recent role was the Vice President of Technical

Services. Her career has included both domestic and international assignments, including a role as the President of Lockheed Martin Canada.

Carey is a certified Program Management professional who has published over ten papers, one of which was recognized by Time Life Books.

Carey and her husband Roy have three children; Kyle, Kristin and Brian. The family resides in Haymarket, Virginia near her mother, Mary Kay, who is an important part of their family.

Carey considers her most outstanding professional achievement as the ability to growing and diversifying businesses into new market areas, improving program performance, establishing customer relationships at all levels through a responsive commitment to delivery and achieving top 100 in STEM

and diverse STEM leaders. Her greatest accomplishment though "is marrying a wonderful person and having three terrific children."

The MAA is pleased to recognize Carey (Wurgler) Smith ('81) as the 2016 Outstanding Alumni.

## Welcome New Board Members



Gary Blume ('78) joins the MAA Board of Trustees from Atlanta, GA as the Association's first long-distance member. Gary works in the information technology security, risk and compliance industry having recently joined the RSA Security division of EMC Corp. as a global account director for the Archer GRC group.

Following graduation from MHS, Gary was appointed to the US Naval Academy where he spent three years in naval officer training, academics, varsity football and world exploration. Upon his honorable discharge, he completed his BA degree in Operations Management at Malone University and his MBA in Executive Management at Ashland University.



Cris (Bryant) Mohr ('82) has spent her entire life in the Marlinton school district. She and her husband Larry currently reside in Marlboro Township with their two children, Nathan and Brady.

Cris worked at Alliance Community Hospital for eighteen years, before graduating from Stark State College in 2011 where she earned her Associates degree in Health Information Management. She is currently employed as a staffing coordinator at American Medical Personnel (AMP) in North Canton.

# Your Marlinton Alumni Association

## Giving.

### TOP 5 NAMES OF MAA DONORS

THE RESULTS ARE IN:

#### MEN:

**01. JAMES**

**02. JOHN**

**03. ROBERT**

**04. THOMAS**

**05. WILLIAM**

#### WOMEN:

**01. BARBARA**

**02. KAREN**

**03. MARY**

**04. NANCY**

**05. SHIRLEY**

**DON'T SEE YOUR  
NAME?  
HERE'S YOUR  
CHANCE!**

USE THE ENVELOPE TO SEND IN YOUR  
DONATION TODAY! EVEN IF YOUR NAME IS HERE!

## Tell Us About You!

We want to stay in touch with all our alumni! It is always wonderful to learn about your latest accomplishments and share them through our Alumni News for all to enjoy!

Let us know what you've been up to since you've graduated, or since the last time you contacted us by filling out the form at [marlingtonalumni.org](http://marlingtonalumni.org) or by emailing us at [marlingtonalumni@yahoo.com](mailto:marlingtonalumni@yahoo.com). You can always update this information in the future to help keep everyone up-to-date on your achievements! Don't forget to let us know when you are scheduling a gathering or reunion. We have resources to help you plan your event!

## Benefits of IRA Charitable Contributions

You can make a difference! If you are 70½ or older you may be able to reduce the income and taxes from your IRA withdrawals while also supporting the Marlinton Alumni Association with a Qualified Charitable Distribution.

Benefits of a Qualified Charitable Distribution:

- Your gift will be put to use today, allowing you to make a difference immediately
- Avoid taxes on transfers of up to \$100,000 from your IRA to the Marlinton Alumni Association
- Satisfy your required minimum distribution (RMD) for the year
- Reduce your taxable income, even if you do not itemize deductions
- Make a gift that is not subject to the 50% deduction limits on charitable gifts

To make your gift before December 31, contact your Financial Advisor or Financial Institution. Checks must be payable to the Marlinton Alumni Association. Questions? Contact Vondea Sheaffer (330) 697-4036 or Bill Liber (330) 454-5390.

## Class of 1990 Funds Scholarship

The MAA is pleased to announce the founding of the Class of 1990 Scholarship Fund. This new scholarship is the result of a dedicated class with many strong ties to the community and a compelling desire to help deserving Marlinton graduates continue their education. More information will be forthcoming.

The **Marlinton**  
**Alumni Association**

# 2016 Scholarship Awards

On Monday, April 18, the Marlington Alumni Association held its Annual Meeting and Scholarship Banquet at The Hartville Kitchen where \$58,000 was awarded through 38 scholarships. The students will attend universities in Ohio and across the country.

Recipients are listed in alphabetical order by last name, followed by scholarship received, college attending and area of study.



Erica Buck  
**James Krabill Memorial Scholarship**  
Kent State University  
*Radiology*



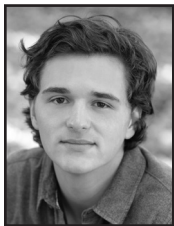
Jonathan Diaz  
**Marlington Alumni Duke Scholarship**  
Imperial Valley College and California State University  
*Accounting*



Gwendalyn Burns  
**Kimi Korleski Memorial Scholarship**  
Texas Tech University  
*Design and Business*



Hannah Fisher  
**Mary Louise Bixler Education Scholarship**  
The University of Akron  
*Early Childhood Development*



Matthew Ackerman  
**Frank J. and Anna Carozzi Memorial Scholarship**  
University of Akron  
*Finance/Law*



Mariah Carver  
**Hastings Scholarship**  
Kent State University  
*Nursing*



Megan Holbrook  
**Rita Moulin Memorial Scholarship**  
Liberty University  
*Worship and Music*



Eric Arters  
**Gordon A. Eaton Scholarship**  
University of Akron  
*Surveying and Mapping*



Raven Coffey  
**Lee and Carolyn Gabric Scholarship**  
**James Krabill Memorial Scholarship**  
Kent State University  
*Zoology and Botany*



Katie Kennedy  
**McIntosh Family Scholarship**  
The University of North Carolina  
*Applied Science*



Audra Balzer  
**Louise Bingham Memorial Scholarship**  
University of Mount Union  
*Business and Art*



Jacob Cook  
**Class of '66 Military Award**  
Akron University  
*Engineering and Army ROTC*



Nathan Kish  
**Carol Teutsch Memorial Scholarship**  
The University of Akron  
*Electrical Engineering*



Holly Bright  
**James Krabill Memorial Scholarship**  
Kent State University  
*Zoology*  
The Ohio State University  
*Veterinary Medicine*



Clay Danner  
**Richard and Annabelle Bohaychyk (Bloss) Scholarship**  
Hocking College  
*Heavy Equipment Management*





Alexander McDaniel  
**Scott and Cheryl Robertson Scholarship**  
 The University of Mount Union  
*Sports Business*



Jarret Ochsendorf  
**Marlington Alumni Association Scholarship**  
 Hillsdale College  
*Music and Pre-Med*



Quentin Rock  
**Thomas Hazen Memorial Scholarship**  
 The University of Mount Union  
*Pre-Law*



Sarah Mason  
**Wayne and Bertha McAlister Family Scholarship**  
 The University of Mount Union  
*Exercise Science and Biology*



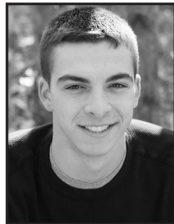
Jillian Ochsendorf  
**Elizabeth Albright Education Scholarship and Gerald P. Burke Scholarship**  
 Malone University  
*Integrated Social Studies*



Nicole Thompson  
**Pete Moulin Scholarship**  
 Walsh University  
*Occupational Therapy*



Morgan Mathes  
**Richard and Annabelle Bohaychyk (Bloss) Scholarship**  
 Horry-Georgetown Technical College  
*Dental Hygiene*



Zachary Owen  
**Ford C. Davis Scholarship**  
 Akron University  
*Mechanical Engineering*



Tyler Tokos  
**General John Churchill Academic Warrior Award / The Scott and Cheryl Robertson Scholarship / Franklin L. (Butch) Muniz Baseball Scholarship**  
 Ashland University  
*Actuarial Science or Finance*



Krista Mattern  
**Lexington Township Volunteer Firefighter Scholarship in Memory of Berkley Barker**  
 Kent State University  
*Pre-Med Biology*



Marlee Peck  
**Melvin J. Snode Memorial Scholarship**  
 The University of Mount Union  
*Exercise Science or Nursing*



Adrian Vasu  
**Marlington Alumni Association Scholarship**  
 College (undecided)  
*Computer Science and Engineering*



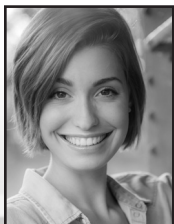
Piper Matthews  
**Eleanor Ramser Scholarship**  
 Kent State University  
*Anthropology*



Sierra Phelps  
**Barbara Yoder Hall Memorial Scholarship**  
 Columbia College Hollywood  
*Dramatic Writing for Film and Television*



Trent Weigand  
**Marlington Alumni Association Scholarship**  
 The University of Akron  
*Mechanical Engineering*



Sophia Miller  
**Howard and Trudy Kitzmiller Student Athlete Scholarship**  
 Bowling Green State University  
*Political Science and Business*



Jennifer Ritchie  
**Harold and Ruth Sweitzer Scholarship**  
 Muskingham University  
*Art*



Hannah Zuppe  
**Marlington Alumni Association Scholarship**  
 The University of Mount Union

# 2015 Marlinton Alumni Association Donors

The MAA gratefully acknowledging those alumni, friends and families who are committed to funding scholarships, academic assistance and student programs. Gifts were made from January 1, 2015-December 31, 2015.

## **DUKE Donations totaling \$1,000 or greater**

### ***Patrons/General Fund Donations***

Dawson Cunningham ('64)  
John Oyster ('90)  
F. Carl Walter ('69)  
Dr. Tom ('68) & Karen (Werstler) ('69)  
Robinson  
Dennis ('76) & Vondea (Bohaychuk)  
( '76) Sheaffer

### ***Elizabeth Albright Education Scholarship***

Larry & Nancy (Albright) Shinn

### ***Mary Louise Bixler Education Scholarship***

Gerald ('56) & Mary Louise (Anstine)  
( '58) Bixler

### ***Richard & Annabelle (Bloss) Bohaychuk Scholarship***

Gerald ('56) & Mary Louise (Anstine)  
( '58) Bixler  
Dennis ('76) & Vondea (Bohaychuk)  
( '76) Sheaffer

### ***Frank & Anna Carozzi Scholarship***

The Carozzi Family

### ***Class of 1966 Military Award***

Dale ('66) & Janice (Kesterke) ('66)  
Lucas  
Edward ('66) & Kay (Shoemaker) ('67)  
Peterson

### ***Fred W. Elsass, Gen. John Churchill Academic Warrior Award***

Fred ('59) & Jill Elsass

### ***Barbara Yoder-Hall Scholarship***

Jason ('89) & Heather (McElroy) ('89)  
Hall

### ***Lexington Twp. Vol. Fire Department in Memory of Berkley Barker Scholarship***

Lexington Vol. Fire Department

### ***Scott & Cheryl Robertson Scholarship***

Scott ('80) & Cheryl Robertson

### ***Melvin J. Snode Scholarship***

The Snode Family

## **DUCHESS Donations totaling \$500-\$999**

### ***Patrons/General Fund Donations***

Class of 1975  
Gregg Shinn, DVM ('66)  
Tom ('75) & Jody (Rowe) ('77) Sivy

### ***Elizabeth Albright Education Scholarship***

Jeff Fisher ('93)

### ***Richard & Annabelle (Bloss) Bohaychuk Scholarship***

Michael ('82) & Jill (Shade) ('84)  
Anstine

### ***Class of 1966 Military Award***

Tom ('66) & Mary (Albright) ('66)  
Swartz  
John (Jett) ('66) & Terry Thomas

### ***Barbara Yoder-Hall Scholarship***

Tom & Gwen (Burdick) ('69) Liverett

### ***Lexington Twp. Vol. Fire Department in Memory of Berkley Barker Scholarship***

Patricia Barker

## **Knight Donations totaling \$100-\$499**

### ***Patrons/General Fund Donations***

Class of '65 group donation  
Ronald ('51) & Mary Davis  
Emily (Wallace) Deack ('08)  
Jan Essick ('05)  
Nick ('96) & Andrea Evanich  
Jim Fisher ('86)  
Scott ('82) & Joyce Frase  
Karen (Zellers) Garra ('59)  
Julie Greiner ('01)  
Wally ('63) & Andrea (Miller) ('63)  
Gumm  
Tom Hall ('57)  
Robert F. Haines ('45)  
Cindy (Phillips) Hazelton ('71)  
Mary (Yoder) Hilmer ('53)  
Twila (Zumkehr) ('56) Hoover  
John Kennedy ('69)  
Joe ('84) & Jennifer (Burden) ('84)  
Knoll  
Maj. Emil D. Koval, Jr., USAF (Ret)  
( '77)

Tim ('65) & Pat Lanzer  
Rev. Marvin Lare ('52)  
Marilyn (Stauffer) Lauby ('62)  
Kerri (Braucher) Lohr ('93)  
Joelle McIlroy  
Jerry Monter  
Tim ('90) & Beth (Draper) ('90)  
Muckley  
Sue (Robertson) Neil ('79)  
Marcella (Kennedy) Olenzak ('68)  
Alan Oyster ('66)  
Sally (Myers) Petrucci ('65)  
Sharon (Moser) Pfister ('86)  
Bill ('70) & Nancy (Phillips) ('72)  
Prueter  
Jeff Pucci ('82)  
Kevin ('78) & Barbara (Hoover)  
( '80) Pucci  
Janice (Rininger) Raber ('71)  
Monica (Egert) Smith ('93)  
Dr. Larry ('78) & Sue Ann  
(Sweitzer) ('79) Ray  
Ray Sluss ('44)  
Henry ('35) & Maryanna Sweitzer  
Kay ('55) & Donna (Rohrer) ('55)  
Vaughan  
Karen (Schaffer) Vrabec ('89)  
Kathy (Thomas) Williams ('69)  
DeAnn Zufall ('84)

### ***Elizabeth Albright Education Scholarship***

William Eberle ('64)  
Jim Fisher ('86)  
Twila (Zumkehr) Hoover ('56)  
Joelle McIlroy  
Bill ('70) & Nancy (Phillips) ('72)  
Prueter

### ***Louise Bingham Scholarship***

Dale ('66) & Gerri (Schillig) ('65)  
McGirr  
Robert ('61) & Mary Lou (Biery)  
( '61) Muckley

### ***Richard & Annabelle (Bloss) Bohaychuk Scholarship***

William & Michelle (Vaughan) ('81)  
Bakan  
William ('47) and Lois Bloss  
Nick ('81) & Joy Bohaychuk  
Scot Bohaychuk ('82)  
Tom ('71) & Penny (Patterson) ('73)  
Boyce



Ronald ('51) & Mary Davis  
 Alan ('81) & Deborah (Krichbaum) ('87) Fox  
 Lee ('82) & Carolyn Gabric  
 Marsha (Rinehart) Graham ('70)  
 Bruce ('75) & Pam (Mullet) ('78) Hickinbotham  
 Mary (Yoder) Hilmer ('53)  
 Twila (Zumkehr) ('56) Hoover  
 Kendall Presbyterian Church  
 Bryan & Sandra Knowles  
 Bill ('65) & Melinda Liber  
 Nancie Lively  
 Marlboro Women's Club  
 Joelle McIlroy  
 Wendy Merkert  
 Bill & Lou Mills  
 Robert ('61) & Mary Lou (Biery) ('61) Muckley  
 Hannah Paulin  
 Don ('52) & Janet (Hamlin) ('53) Prather  
 Bill ('70) & Nancy (Phillips) ('72) Prueter  
 Gorman & Crystal (Bohaychyk) ('79) Rasmussen  
 Carl ('50) & Jeanette Richards  
 Tom ('77) & Vanessa (Bohaychyk) ('77) Richards

#### **Gerald Burke Scholarship**

Jeff Toussant ('67)

#### **Class of 1966 Military Award**

Douglas Cunningham, DVM ('66)  
 Gary & Sue (Breit) ('66) Dennis  
 John & Connie (Snode) ('66) Flynn  
 Mary Lou (Buehler) Gambill ('66)  
 Steve ('65) & Linda (Cornwell) ('66) Hoover  
 John ('66) & Ann Lang  
 Henry Lewis ('66)  
 Dale McGirr ('66)  
 Alan Oyster ('66)  
 Virginia (Zeller) Shepard ('66)

#### **Ford C. Davis Scholarship**

Nadine (Davis) Donachy ('49)

#### **Gordon Eaton Scholarship**

Bob & Jill (Eaton) Simms ('84)

#### **Barbara Yoder-Hall Scholarship**

Bruce & Donna McElroy

#### **Thomas Hazen Scholarship**

Anonymous  
 Joelle McIlroy  
 Robert ('61) & Mary Lou (Biery) ('61) Muckley  
 Richard Pinkerton ('68)  
 Margaret (Sweitzer) Rose ('57)

#### **Kimi Korleski Scholarship**

Greg Hoiles

#### **James Krabill Scholarship**

Jeff Battershell ('90)  
 Jeff Toussant ('67)

#### **Lexington Twp. Vol. Firefighters'/ Berkley Barker Scholarship**

Bonnie Twaddle  
 Ed & Lela Gibson

#### **McIntosh Family Scholarship**

Aaron & Danielle (McIntosh) ('97) Hawk  
 Brinton McIntosh ('02)  
 Jonathan ('00) & Jennifer McIntosh

#### **Franklin (Bud) Muniz Baseball Scholarship**

Jeffery Thomas ('78)

#### **Eleanor Ramser Scholarship**

Marsha (Rinehart) Graham ('70)  
 Kevin Krabill ('86)  
 Carol (Stermer) McGirr ('59)  
 Marc & Michele (Riley) ('87) Ohmer  
 Kevin ('78) & Barbara (Hoover) ('80) Pucci

#### **Melvin J. Snode Scholarship**

John & Connie (Snode) ('66) Flynn

#### **LADY Donations totaling \$50-\$99**

##### **Patrons/General Fund Donations**

Family of Karli Collins ('15)  
 Jaclyn Cracknell ('08)  
 Tim ('90) & Bonnie Freshly

##### **Group Donation:**

Phil ('73) & Marty Carman  
 Selma (Umberger) Kennedy  
 Pat & Jan (Bowen) ('79) Lauer  
 John & Beverly (Carman) ('67) Seeton

John ('68) & Sue (Myers) ('68) Burkey  
 Sally (Reber) ('80) Pyle  
 Lee-Ann (Williams) ('80) Stephens

#### **Elizabeth Albright Education Scholarship**

Don ('64) & JoAnne (Robart) ('64) Albright  
 Jim & Joyce Lackey

#### **Richard & Annabelle (Bloss) Bohaychyk Scholarship**

Anonymous  
 Phil & Ruth Apitz  
 Barbara Bussard  
 Charles & Sandra Dandrea  
 Tom & Janice (Moore) Dwenger  
 Kim & Yvonne Fenrich  
 Five Rivers Bobbin Lacemakers  
 Ken & Suzanne Graham  
 Group Donation:  
 Katie Cavalier  
 Erin Cingel & Family  
 Nicolle Robinson & Family  
 Dana & Brenda Harris  
 Mark & Barbara Hupp  
 Howard & Leslie Hurwitz  
 Invent Now  
 Neil & Darla Manecke  
 Charles & Shirley Mason  
 John ('60) & Carolyn McGirr  
 Anthony & Marilyn (Boyce) ('77) Rothermel  
 Philip ('78) & Debbie Sheaffer  
 Anna Slaght  
 Robert & Carole Smith  
 Pamela Strouble

#### **Class of 1966 Military Award**

Carol (Frank) Glover ('66)  
 Albert & Faith (Johnson) ('66) Plisousky

#### **Gordon Eaton Scholarship**

Bryan Eaton ('88)

#### **Lee & Carolyn Gabric Scholarship**

Bob Keen

#### **Barbara Yoder-Hall Scholarship**

Pat & Donna Calvey  
 Dan & Meghan Clancy  
 Ed & Amy Closky

Caleb Hall ('14)  
Ryan Leshner  
Judith Meek  
Tom & Erika Norris  
Mike Rizzo  
Ryan & Heather Sick  
Allen Strouble ('09)

**Thomas Hazen Scholarship**

Wade ('41) & Audrey Fox  
Patricia (Robinson) Maldoven ('61)  
Dianne K. Reynolds ('59)

**Lexington Twp. Vol. Fire  
Department in Memory of Berkley  
Barker Scholarship**

Larry ('76) & Linda (Bedford) ('77)  
Green

**Wayne & Bertha McAlister  
Scholarship**

John Morris & Joyce Lamb ('87)

**Franklin (Bud) Muniz Baseball  
Scholarship**

John Morris & Joyce Lamb ('87)

**Melvin J. Snodgrass Scholarship**

Jim & Jodeen Booth  
Wade ('41) & Audrey Fox

**EARL Donations totaling  
\$25-\$49**

**Patrons/General Fund Donations**

Paula (Fox) Baker ('71)  
Marjorie (Hagan) Battershell ('65)  
Mike ('77) & Kathy Butcher  
The Clorox Co. (Matching Gift)  
Kim (Markham) Cully ('73)  
Mary (Umberger) Devies ('39)  
John Flickinger ('63)  
Karen (Slabaugh) Humphries ('83)  
Bonnie (Petre) Mills ('67)  
Ken ('48) & Nancy Ringer  
Ron Williamson ('78)  
Larry J. Wilson ('68)

**Elizabeth Albright Education  
Scholarship**

Warren & Chris Abrahamson  
Regina Fugate  
Miriam Pride  
Rick ('74) & Sylvia (Tanksley) ('75)  
Robart

**Louise Bingham Scholarship**

Karen (Koons) Carroll ('65)

**Richard & Annabelle (Bloss)  
Bohaychyk Scholarship**

Akron Porcelain Plastics  
Sam ('54) & Barb (Bretz) ('54) Bacon  
David & Pam Barnes  
Robert & Marcia Benson  
Bill & Barb Buck  
Greg ('74) & Susu Burke  
Carol Delagrange  
Edward & Anna Griffin  
Gordon & Shirley Hjortaa  
Jack & Ann (Ward) ('54) Lewis  
Jeffrey & Marlana Kohler  
Don Miller  
Shirley Perrin  
Scott ('83) & Marci (Frank) ('83)  
Schwinn  
Patricia Sheaffer  
Dennis & Faith ('82) Sheaffer-Polen  
James & Ruth Sibert  
Howard & Berdine Strouble  
Scott & Jill Young and Family

**Ford C. Davis Scholarship**

Thomas Mason ('14)

**Barbara Yoder-Hall Scholarship**

Dave & Wendy Butch

**Thomas Hazen Scholarship**

Skip (George) Coulter ('63)  
Clyde ('68) & Sherry Lepley  
Larry Miller ('63)  
Carolyn (Hazen) Wallen ('68)

**Howard & Trudy Kitzmiller Student  
Athlete Scholarship**

Alice (Krichbaum) Fitzpatrick ('51)

**James Krabill Scholarship**

Karen (Koons) Carroll ('65)

**McIntosh Family Scholarship**

William R. Wyss, Jr. ('78)

**Franklin (Bud) Muniz Baseball  
Scholarship**

John & Anna Searfoss

**Eleanor Ramser Scholarship**

Cara (Coveleski) ('83) Ganser  
Vivian S. Schmucker ('75)

**Carol Teutsch Scholarship**

Karen (Koons) Carroll ('65)

**HERALD Donations totaling  
less than \$25**

**Patrons/General Fund Donations**

Susan (Rastetter) Rafferty ('65)

**Elizabeth Albright Education  
Scholarship**

Bruce & Terrie Rohrer

**Richard & Annabelle (Bloss)  
Bohaychyk Scholarship**

John & Kay Birk  
Donald & Darlene Utrup  
Nancy Wise

**Barbara Yoder-Hall Scholarship**

Emily Heverly

**2015 MEMORIAL AND  
TRIBUTE GIFTS**

Caring alumni, friends and family members remembered and honored the following individuals with gifts to the Marlington Alumni Association from January 1, 2015-December 31, 2015.

**IN MEMORY**

**In memory of Elizabeth Albright**

Warren & Chris Abrahamson  
Don ('64) & JoAnne (Robart) ('64) Albright  
William Eberle ('64)  
Jeff Fisher ('93)  
Jim Fisher ('86)  
Regina Fugate  
Twila (Zumkehr) Hoover ('56)  
Jim & Joyce Lackey  
Joelle McIlroy  
Miriam Pride  
Bill ('70) & Nancy (Phillips) ('72) Prueter  
Rick ('74) & Sylvia (Tanksley) ('75) Robart  
Bruce & Terrie Rohrer  
Larry & Nancy (Albright) Shinn

**In memory of Harold (Bud)  
Deviess ('39)**

Phil ('73) & Marty Carman  
Mary (Umberger) Devies ('39)  
Twila (Zumkehr) ('56) Hoover  
Selma (Umberger) Kennedy  
Pat & Jan (Bowen) ('79) Lauer  
Joelle McIlroy  
John & Beverly (Carman) ('67) Seeton

**In memory of Thomas Hazen**

Margaret (Sweitzer) Rose ('57)  
Carolyn (Hazen) Wallen ('68)  
Joelle McIlroy



***In memory of Christine  
(Hershberger) Kohl ('82)***

Jeff Pucci ('82)

***In memory of Floyd Walter***

F. Carl Walter ('69)

***In memory of Ike Farrah***

Gregg Shinn, DVM ('66)

***In memory of Randy Krabill ('67)***

Gregg Shinn, DVM ('66)

***In memory of Ashley (White)  
Stumpf ('05)***

Janice (Rininger) Raber ('71)

***In memory of Annabelle (Bloss  
Bohaychyk) Fearon ('54)***

Akron Porcelain Plastics

Michael ('82) & Jill (Shade) ('84)

Anstine

Phil & Ruth Apitz

Sam ('54) & Barb (Bretz) ('54) Bacon

William & Michelle (Vaughan) ('81)

Bakan

David & Pam Barnes

Robert & Marcia Benson

John & Kay Birk

Gerald ('56) & Mary Louise (Anstine)

('58) Bixler

William ('47) & Lois Bloss

Nick ('81) & Joy Bohaychyk

Scot Bohaychyk ('82)

Tom ('71) & Penny (Patterson) ('73)

Boyce

Bill & Barb Buck

Greg ('74) & Susu Burke

Barbara Bussard

Katie Cavalier

Erin Cingel & Family

Charles & Sandra Dandrea

Ronald ('51) & Mary Davis

Carol Delagrange

Tom & Janice (Moore) Dwenger

Kim & Yvonne Fenrich

Five Rivers Bobbin Lacemakers

Alan ('81) & Deborah (Krichbaum)

('87) Fox

Lee ('82) & Carolyn Gabric

Ken & Suzanne Graham

Marsha (Rinehart) Graham ('70)

Edward & Anna Griffin

Dana & Brenda Harris

Bruce ('75) & Pam (Mullet) ('78)

Hickinbotham

Mary (Yoder) Hilmer ('53)

Gordon & Shirley Hjortaas

Twila (Zumkehr) ('56) Hoover

Mark & Barbara Hupp

Howard & Leslie Hurwitz

Invent Now

Kendall Presbyterian Church

Jeffrey & Marlana Kohler

Bryan & Sandra Knowles

Jack & Ann (Ward) ('54) Lewis

Bill ('65) & Melinda Liber

Nancie Lively

Neil & Darla Manecke

Marlboro Women's Club

Charles & Shirley Mason

John ('60) & Carolyn McGirr

Joelle McIlroy

Wendy Merkert

Don Miller

Bill & Lou Mills

Robert ('61) & Mary Lou (Biery) ('61)

Muckley

Hannah Paulin

Shirley Perrin

Don ('52) & Janet (Hamlin) ('53)

Prather

Bill ('70) & Nancy (Phillips) ('72)

Prueter

Gorman & Crystal (Bohaychyk) ('79)

Rasmussen

Carl ('50) & Jeanette Richards

Tom ('77) & Vanessa (Bohaychyk)

('77) Richards

Nicolle Robinson & Family

Anthony & Marilyn (Boyce) ('77)

Rothermel

Scott ('83) & Marci (Frank) ('83)

Schwinn

James & Ruth Sibert

Anna Slaght

Dennis ('76) & Vondea (Bohaychyk)

('76) Sheaffer

Pat Sheaffer

Philip ('78) & Debbie Sheaffer

Dennis & Faith ('82) Sheaffer-Polen

Robert & Carole Smith

Howard & Berdine Strouble

Pamela Strouble

Donald & Darlene Utrup

Nancy Wise

Scott & Jill Young & Family

***In memory of Patricia (Tyler) Lare***

Rev. Marvin Lare ('52)

***In memory of Jesse Mitchell ('11)***

Jeff Toussant ('67)

***In memory of David Krichbaum &  
Ruth (Krichbaum) Slicker***

Alice (Krichbaum) Fitzpatrick ('51)

***In memory of Merill Purviance,  
Faculty '57-77***

Ted Purviance ('64)

***In memory of Judy (France)  
Chapman ('72)***

Bill ('70) & Nancy (Phillips) ('72)

Prueter

***In memory of Jeannette (Gerardat)  
Stauffer ('32)***

Marilyn (Stauffer) Lauby ('62)

***In memory of Donald Hall ('58)***

Tom Hall ('57)

***In memory of Jean Shoemaker ('75)***

John Morris & Joyce Lamb ('87)

***In memory of Ashley White-Stumpf  
( '05)***

Paula (Fox) Baker ('71)

**IN HONOR**

***In honor of Mr. & Mrs. Bruce  
Markham***

Kim (Markham) Cully ('73)

***In honor of The Class of 1965***

Marjorie (Hagan) Battershell ('65)

Class of '65 group donation

Bill Liber ('65)

Joelle McIlroy

***In honor of John McIntosh***

William R. Wyss, Jr, ('78)

Find us at:

Website: [Marlingtionalumni.org](http://Marlingtionalumni.org)

Facebook: [MarlingtonAlumniAssociation](https://www.facebook.com/MarlingtonAlumniAssociation)

Email: [marlingtionalumni@yahoo.com](mailto:marlingtionalumni@yahoo.com)

## 2016 STUDENT SCHOLAR SPONSORS

*The following donors graciously sponsored one or more Student Scholar for the 2016 Annual Meeting and Scholarship Banquet.*

Mary (Lamb) Biller ('77)

Emily (Wallace) Deack ('08)

Jim Fisher ('86)

Lee ('82) & Carolyn Gabric

Karen (Zellers) Garra ('59)

Walter ('63) & Andrea (Miller) ('63) Gumm

Jason ('89) & Heather (McElroy) ('89) Hall

Larry ('65) & Julie (Hazen) ('65) Johnson

Bernard Knepp, Jr. ('67)

William Koch

Kevin Krabill ('86)

Clyde ('68) & Sherry Lepley

Bill ('65) & Melinda Liber

Tom & Gwen (Burdick) ('69) Liverette

Joelle McIlroy

Robert ('61) & Mary Lou (Biery) ('61) Muckley

Bill ('54) & Shirley Patton

Mary (Carr) Petrich ('52)

Dr. Tom ('68) & Karen (Werstler) ('69) Robinson

Tom ('66) & Mary (Albright) ('66) Swartz

Kay ('55) & Donna (Rohrer) ('55) Vaughan

Karen (Schaffer) Vrabec ('89)

Berdine (Shoemaker) Walker ('52)

Wayne ('75) & Margaret Wallace

## *Marlington Alumni Association Board*

### OFFICERS

Vondea (Bohaychuk) Sheaffer ('76), *President*

\*Michelle (Vaughan) Bakan ('81), *Vice President*

Karen (Slabaugh) Humphries ('83), *Secretary*

Nancy (Phillips) Prueter ('72), *Treasurer*

William Liber ('65), *Financial Advisor*

### TRUSTEES

\*Sam Bacon ('54)

Gary Blume ('78)

Frank Carozzi ('83)

\*Emily (Wallace) Deack ('08)

\*Jan Essick ('05)

\*Laurie (Santschi) Gemberling ('77)

\*Marsha (Rinehart) Graham ('70)

\*Julie Greiner ('01)

Kevin Krabill ('86)

\*Clyde Lepley ('68)

Cristine (Bryant) Mohr ('82)

Mary Lou (Biery) Muckley ('61)

\*John Oyster ('90)

Martha (Dickerhoof) Palmer ('77)

\*Dan Tolerton ('75)

Karen (Schaffer) Vrabec ('89)

*\*Denotes Scholarship Committee*